

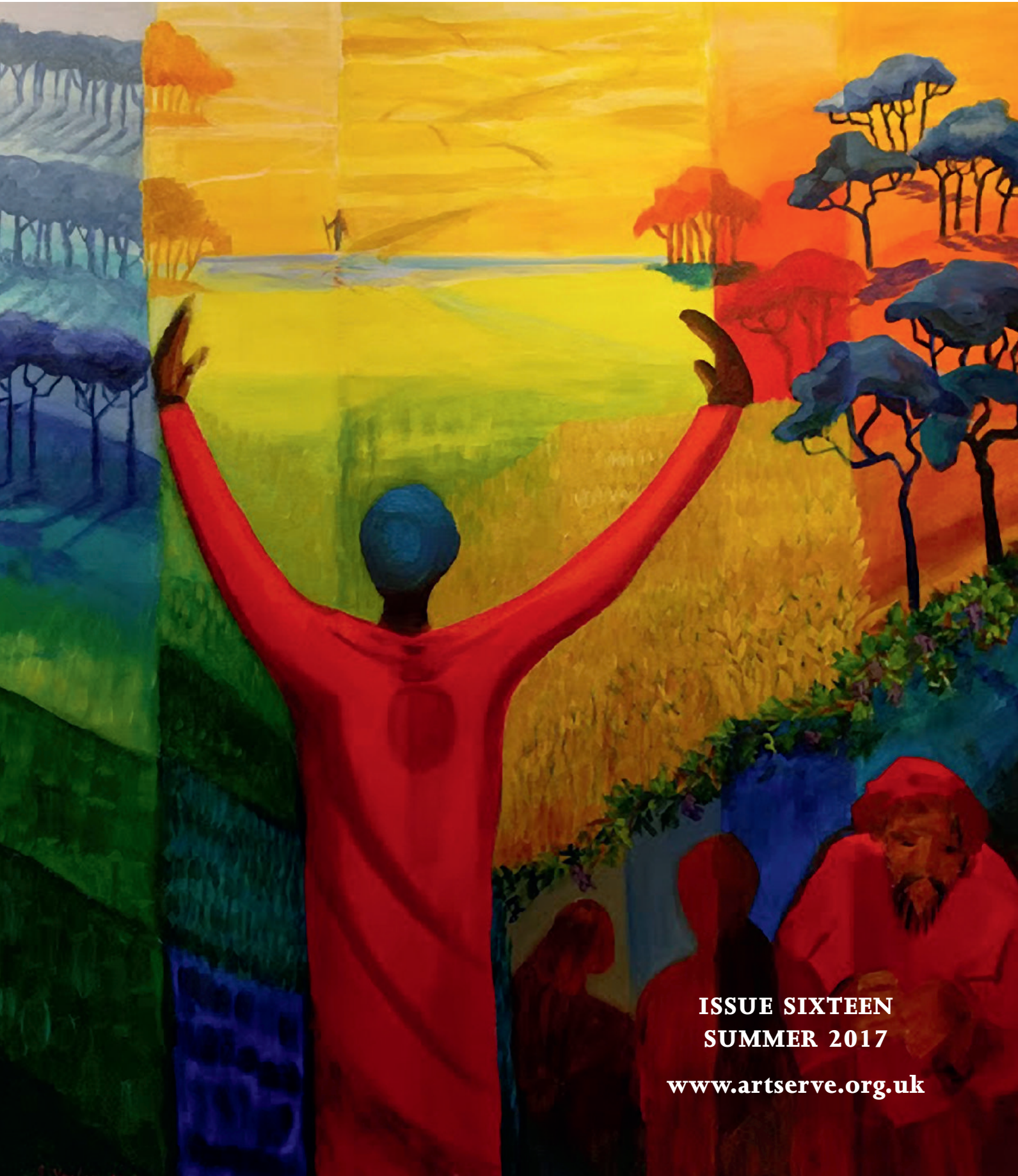
ArtServe
Christian Creativity



CREATIVE JOURNEYS IN PRAYER
LOOKING FORWARD TO OUR FESTIVAL WEEKEND

THE LIMITS OF SOUND
WORSHIP WITHOUT MUSIC

SINGING FROM THE HEART
SHARING THE FAITH OUT LOUD



ISSUE SIXTEEN
SUMMER 2017

www.artserve.org.uk

The cover shows 'The Prodigal' by Shirley Veater. Read more about the painting on page 3.
Copyright remains with the artist.



Contents

Message from the Chair	1
Richenda Milton-Daws	
News	2
Barbara Todd	3
An appreciation by Marion Saunders	
Walking on Water in Haywards Heath	4
Nicola Sheldon describes hosting paintings from the Methodist Collection	
ArtServe Awards	5
Allison Lewis	
Where is worship when the music's gone?	6
Vivien Whitfield asks some difficult questions	
Creative journeys in prayer: our forthcoming Festival Weekend	
Size does matter!	9
Our regular column from 'The Organist' Robin Walker	
My true identity in Christ	10
Andrew Gardiner shares a painful journey	
A woman of spirit	12
The life of Susanna Wesley told by Linda Mae	
Amazing God (You send me out)	14
A new hymn from Kunnagh Scott	
From lands where hunger calls	15
And another from Rob Newton	
Who's who at ArtServe?	16



© ArtServe 2017

Editor:
Post vacant

Typesetting and layout:
Mach 3 Solutions Ltd
www.mach3solutions.co.uk

Printed and distributed by
Moorleys Print & Publishing Ltd,
23 Park Rd, Ilkeston DE7 5DA

Editorial policy

ArtServe aims to inform, inspire and encourage members, and to provide a forum for the sharing of ideas. The Editor welcomes contributions for future issues.

Views expressed within these pages do not necessarily represent the views of ArtServe or its Directors.

Please contact ArtServe if you want to republish text or photos as copyright belongs to the original author/photographer.

ArtServe on the web

www.artserve.org.uk
Facebook.com/artserve.org.uk
Twitter: @_ArtServe

ArtServe is the operating name of Christian Creativity Limited, a company limited by guarantee in England and Wales (no. 06673242) and a registered charity (no.1129831).

Registered office
Trebo, Delaware Road, Gunnislake,
Cornwall PL18 9AR
Tel: 08456 210410
email: info@artserve.org.uk