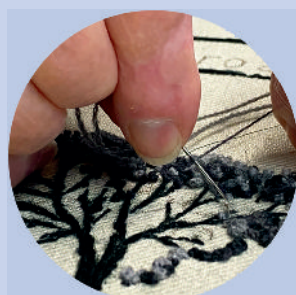
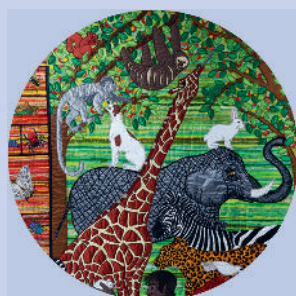


BIBLE STUDY WITH CREATIVITY AT ITS CORE



Cover image: Threads through Creation, Panel 6: water and sky – flow with life! (Photo: Andrew Parkinson).

See pages 10–12 for the full story and more images of this beautiful textile art installation



Contents

Editorial	1
Jude Simms	
News	2
ArtServe Awards	3
Celebrating creativity in our church communities	
Celebrating an Artistic Bicentenary	4
The work of poet, teacher and artist James Smetham	
Called to Create	6
How the process of artmaking becomes a journey of discovery	
Creative Faith Community	9
Exploring God's word through creativity	
Eight Million Stitches to Create the World	10
An exuberant retelling of the creation story	
Breaking	13
A poem by Patrick Baker	
Creating Mission through Heritage	14
Stitching the stories of the Church	
Mary's Memories	16
A poem by Catherine James	
Resources for Lent, Holy Week and Easter	17
Art, poetry, bible reading and meditation	
The Freeman Music Trust	18
A legacy of encouraging and enabling music-making in worship	
Prayer Focus	20
Supporting and encouraging each other in prayer	
Who's Who at ArtServe?	21



© ArtServe 2022

Editor:
Jude Simms

Typesetting and layout:
Mach 3 Solutions Ltd
www.mach3solutions.co.uk

Printed and distributed by
Moorleys Print & Publishing Ltd,
23 Park Rd, Ilkeston DE7 5DA

Editorial policy

ArtServe aims to inform, inspire and encourage members, and to provide a forum for the sharing of ideas. The Editor welcomes contributions for future issues.

Views expressed within these pages do not necessarily represent the views of ArtServe or its Directors.

Please contact ArtServe if you want to republish text or photos as copyright belongs to the original author/photographer.

Acceptance of submissions for publication is at the Editor's discretion, and we reserve the right to edit submissions before publication.

ArtServe on the web

www.artserve.org.uk
Facebook.com/artserve.org.uk
Twitter: @_ArtServe

ArtServe is the operating name of Christian Creativity Limited, a company limited by guarantee in England and Wales (no. 06673242) and a registered charity (no.1129831).

Registered office
4 Gracious Street, Whittlesey
Peterborough, PE7 1AP
Tel: 020 8467 5985 (answerphone)
email: info@artserve.org.uk