



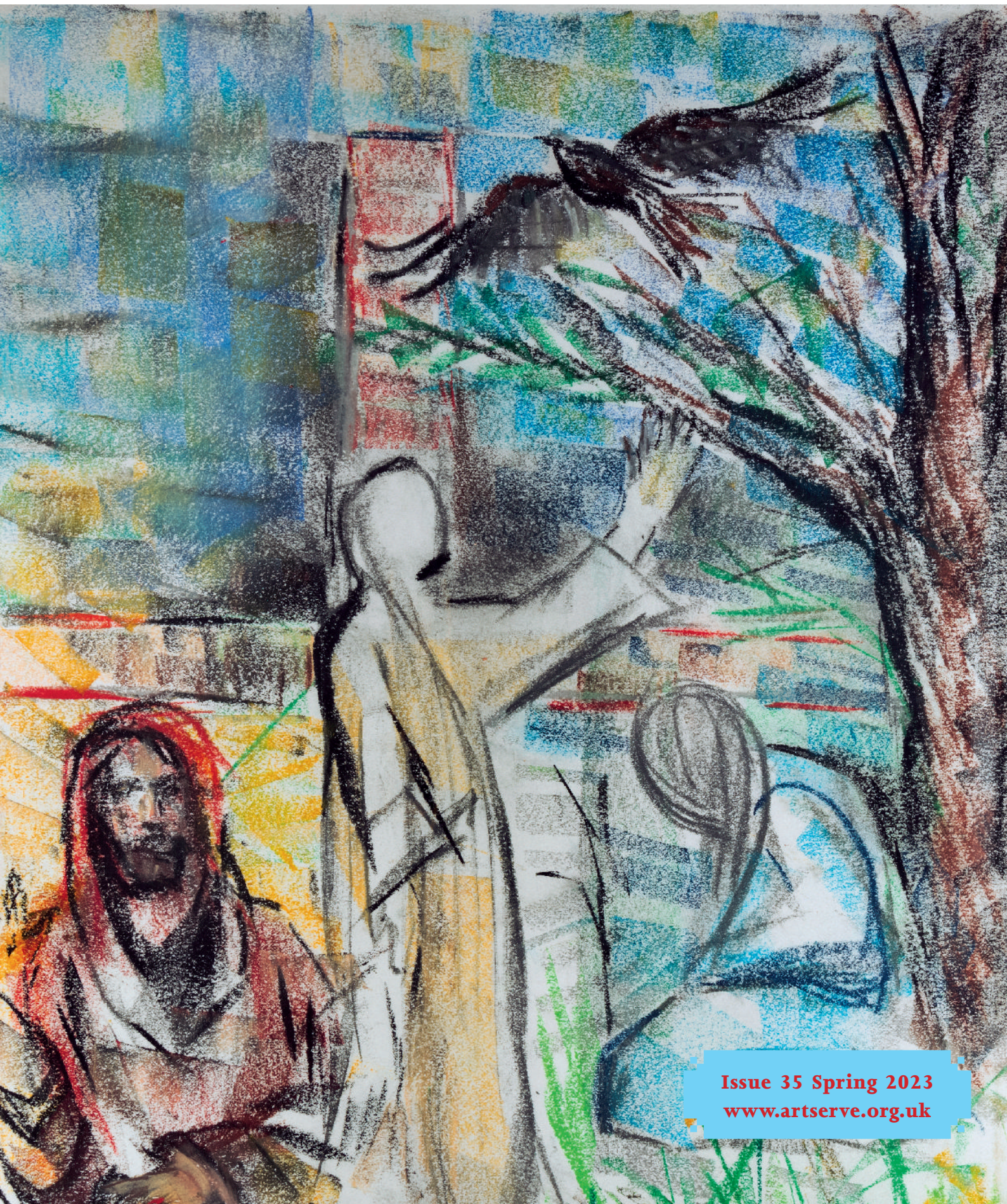
FOLLOWING GOD'S INSPIRATION
GOD LOVES TO INSPIRE AND GUIDE OUR CREATIVITY

AMAZING GRACE

CELEBRATING THE 250TH ANNIVERSARY OF NEWTON'S HYMN

THE TRANSFORMATIONAL POWER OF
CREATIVE ARTS

HEALING AND WELLBEING AT TALITHA ARTS



Issue 35 Spring 2023
www.artserve.org.uk

Front cover image: 'Easter Sunday' by Fiona Brown.

Charcoal and pastel on paper, 42 x 30 cm approx.

Drawn during Holy Week as part of a series of prayerful reflections during Lent.

Fiona is a member of Artserve and the Community of Hopeweavers.



Contents

Editorial	1
Jude Simms	
News	2
Including a message from the ArtServe Chair	
ArtServe Awards	4
Celebrating the creative arts in our congregations	
Creative Conversations	5
Su Hallcroft on the creation of a new arts collective	
Footsteps in Prayer	6
A pilgrimage of prayer curated by Rhona Knight	
Amazing Grace	8
On its 250th anniversary, Andrew Pratt gives a new perspective on the much-loved hymn	
A New Place for New People	9
Exploring faith through creativity, spirituality and wellbeing	
Following God's Inspiration	10
Tracy Williamson on her ministry alongside singer-songwriter Marilyn Baker	
Wounded Wood for a Wounded World	12
Jean Lamb explores the joy of wood carving	
Cypress	13
A poem by Catherine James	
The Transformational Power of Creative Arts	14
Jenna Thorne on the work of Talitha Arts	
Oberammergau – living the Passion	16
Richenda Milton Daws shares her experience	
Reviews and Resources	18
Comedy, creative labyrinths, and a selection of Lent resources	
Prayer Focus	20
Supporting and encouraging each other in prayer	
Who's Who at ArtServe?	21



© ArtServe 2023

Editor:
Jude Simms

Typesetting and layout:
Mach 3 Solutions Ltd
www.mach3solutions.co.uk

Printed and distributed by
Moorleys Print & Publishing Ltd,
23 Park Rd, Ilkeston DE7 5DA

Editorial policy

ArtServe aims to inform, inspire and encourage members, and to provide a forum for the sharing of ideas. The Editor welcomes contributions for future issues.

Views expressed within these pages do not necessarily represent the views of ArtServe or its Directors.

Please contact ArtServe if you want to republish text or photos as copyright belongs to the original author/photographer.

Acceptance of submissions for publication is at the Editor's discretion, and we reserve the right to edit submissions before publication.

ArtServe on the web

www.artserve.org.uk
Facebook.com/artserve.org.uk
Twitter: @_ArtServe

ArtServe is the operating name of Christian Creativity Limited, a company limited by guarantee in England and Wales (no. 06673242) and a registered charity (no.1129831).

Registered office
4 Gracious Street, Whittlesey
Peterborough, PE7 1AP
Tel: 020 8467 5985 (answerphone)
email: info@artserve.org.uk